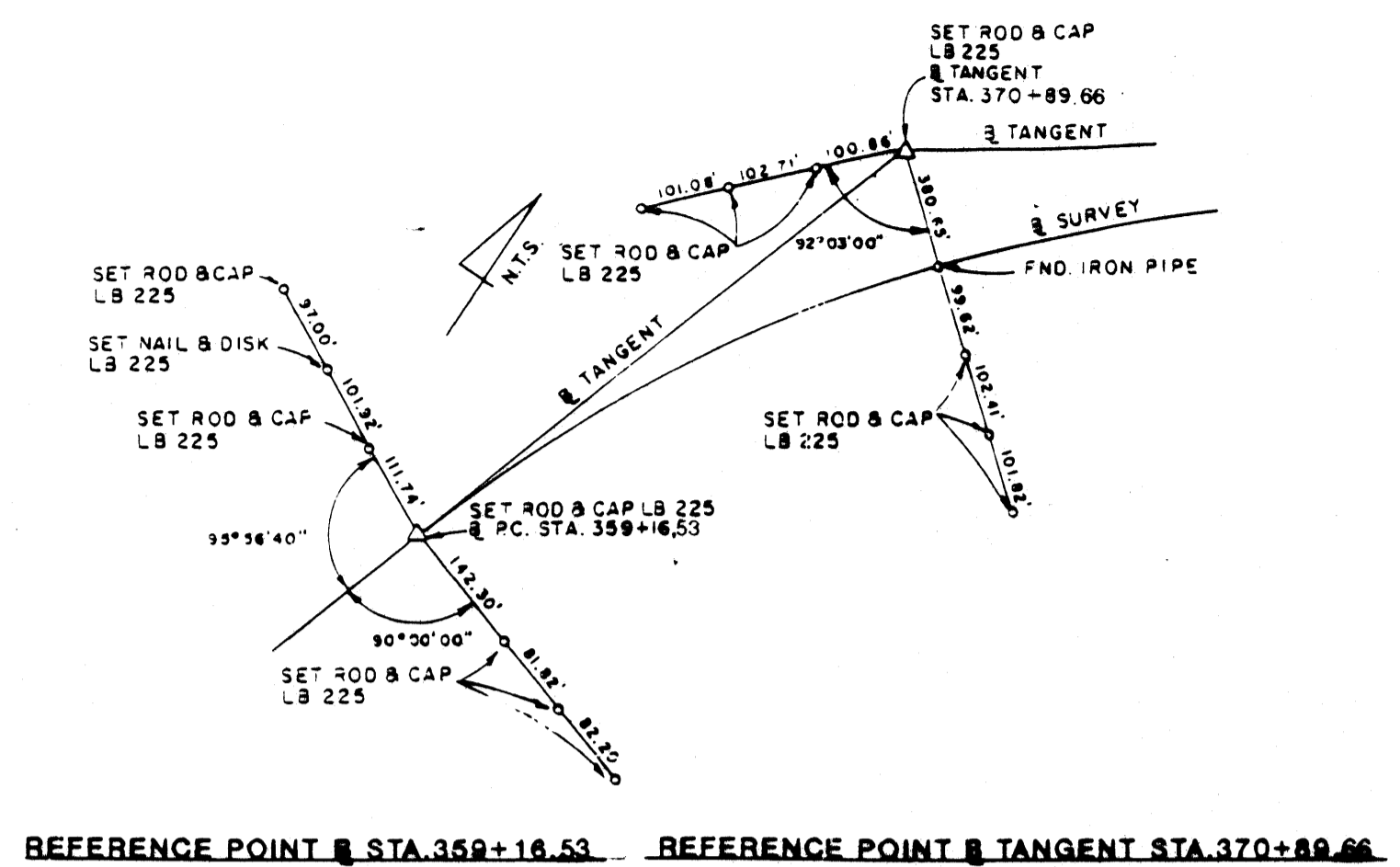
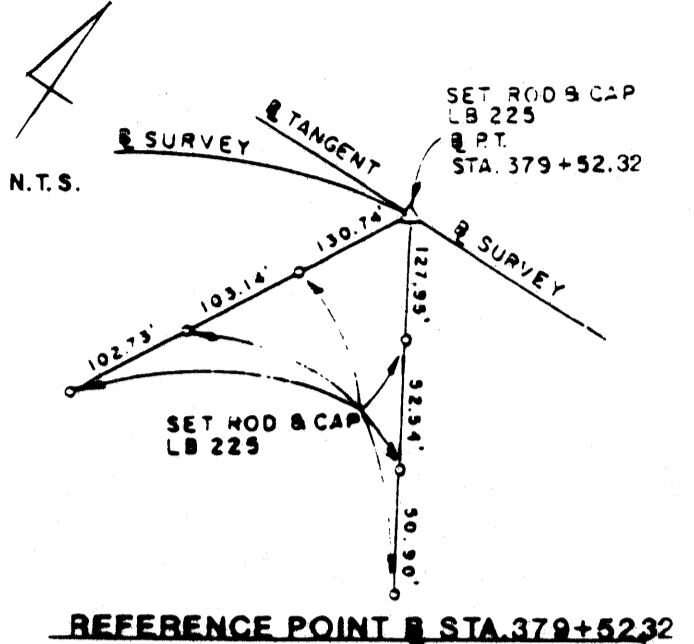


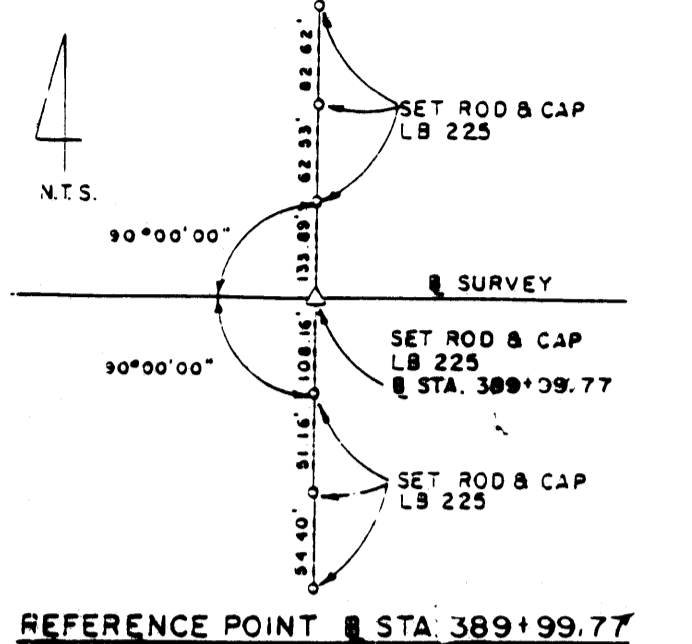
Filed for record this 17th day of Nov., 1995 in Plat Book 13, Page 98. File # 1145622. Marked stills check of circuit court by Charlotte Surber, S.C.



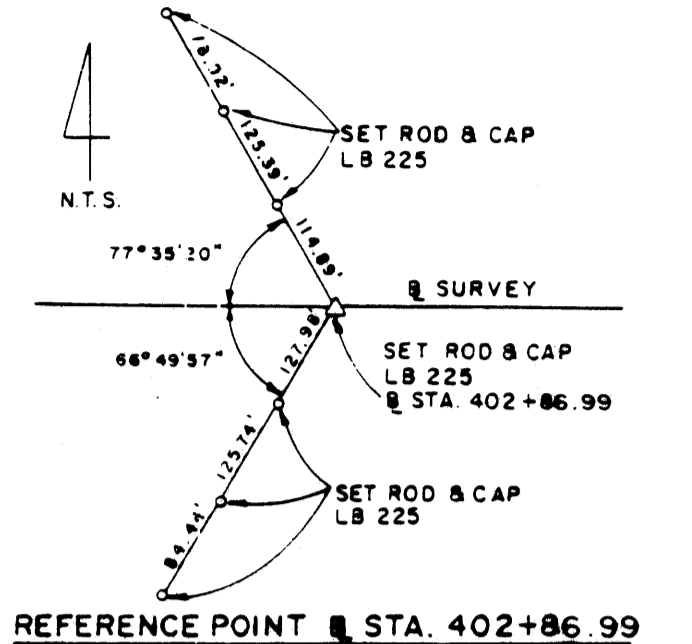
REFERENCE POINT @ STA. 359+16.53 REFERENCE POINT @ TANGENT STA. 370+89.86



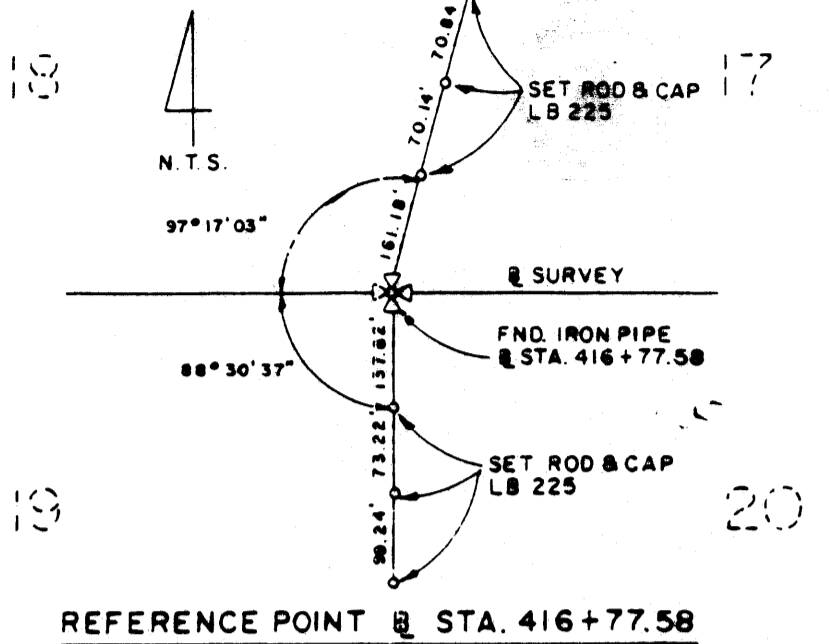
REFERENCE POINT @ STA. 379+52.32



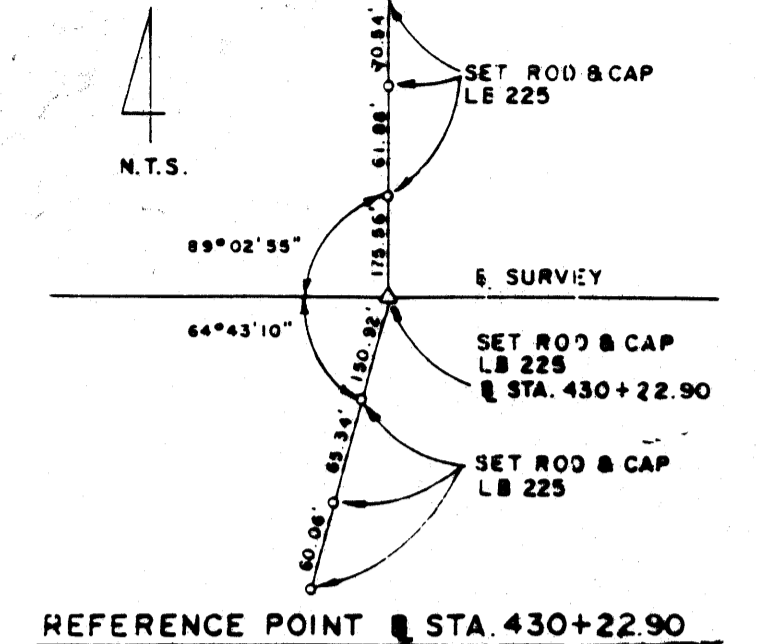
REFERENCE POINT @ STA. 389+99.77



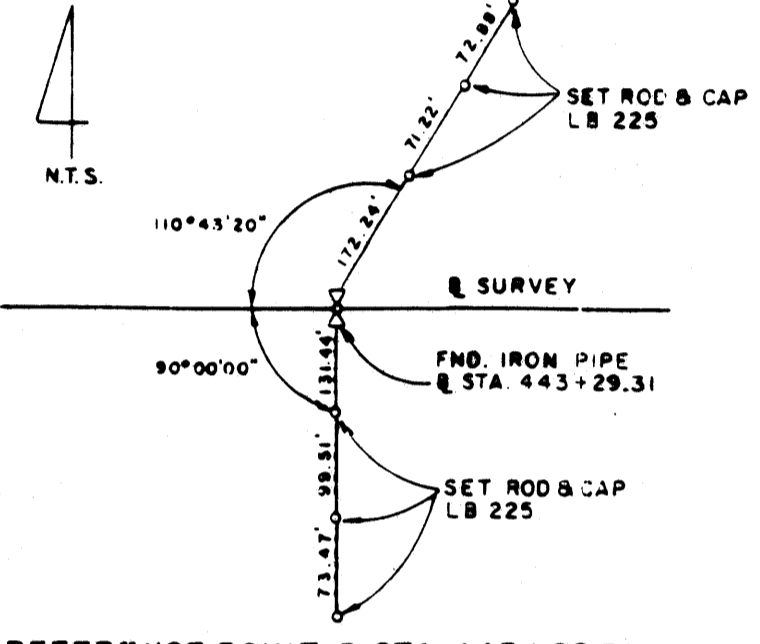
REFERENCE POINT @ STA. 402+86.99



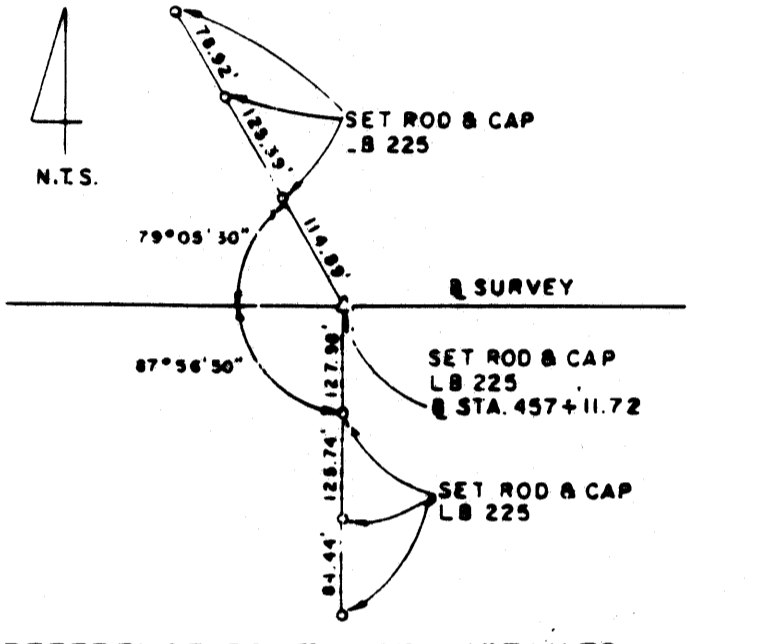
REFERENCE POINT @ STA. 416+77.58



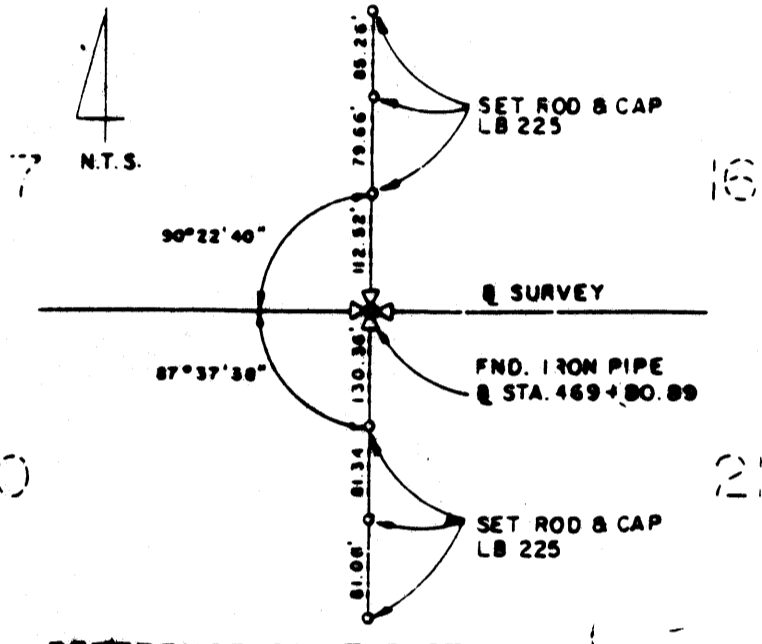
REFERENCE POINT @ STA. 430+22.90



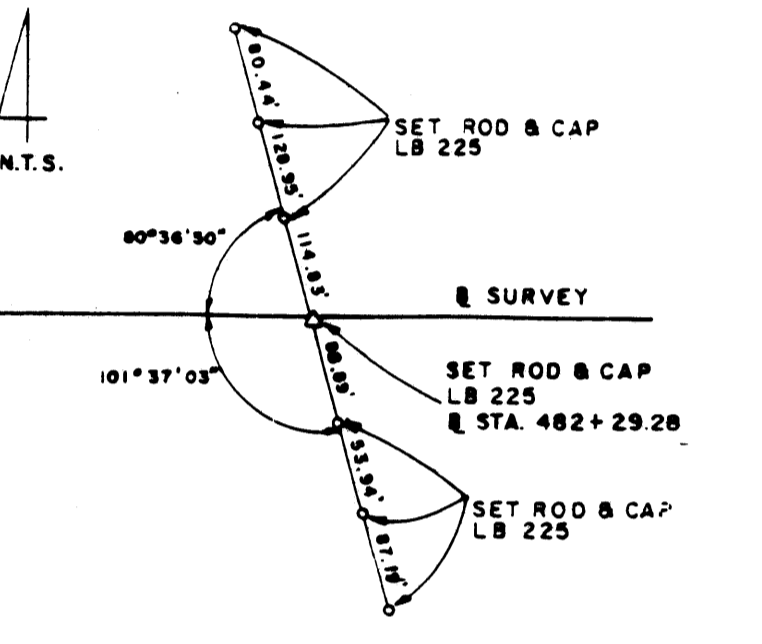
REFERENCE POINT @ STA. 443+29.31



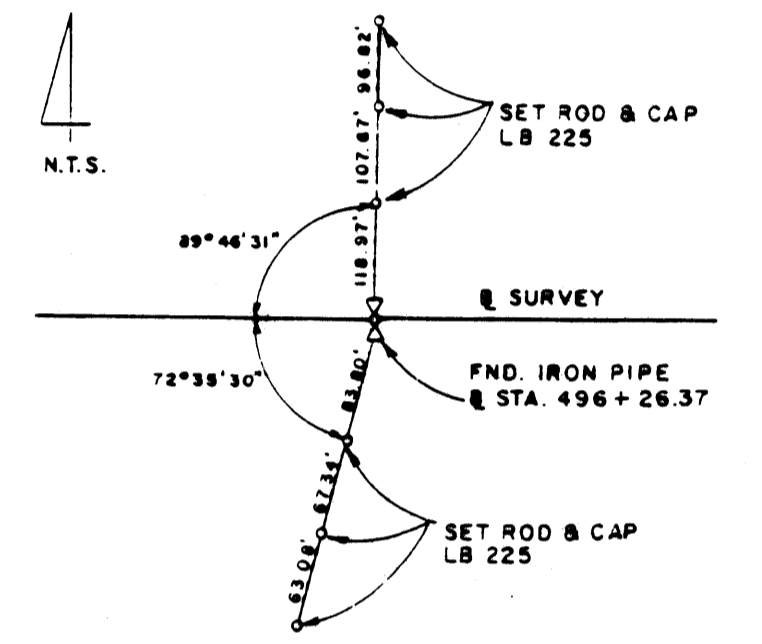
REFERENCE POINT @ STA. 457+11.72



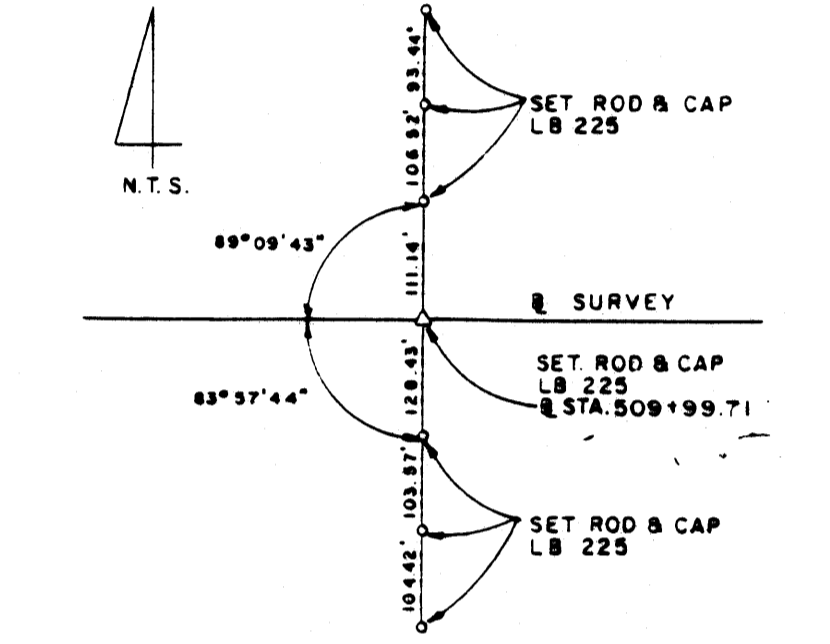
REFERENCE POINT @ STA. 469+80.89



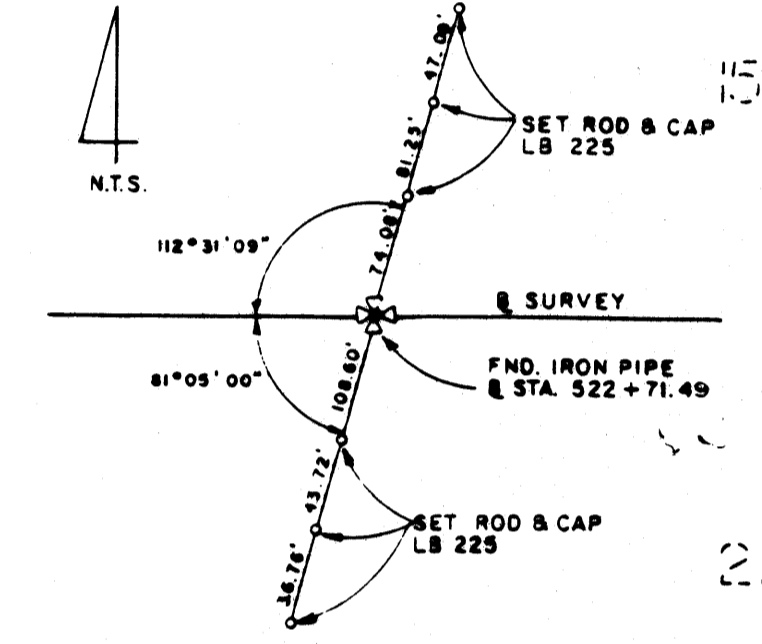
REFERENCE POINT @ STA. 482+29.28



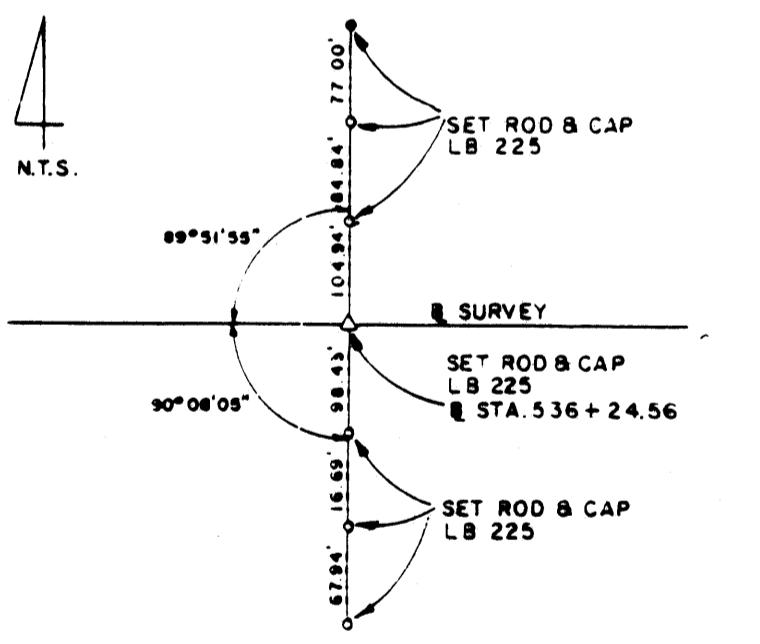
REFERENCE POINT @ STA. 496+26.37



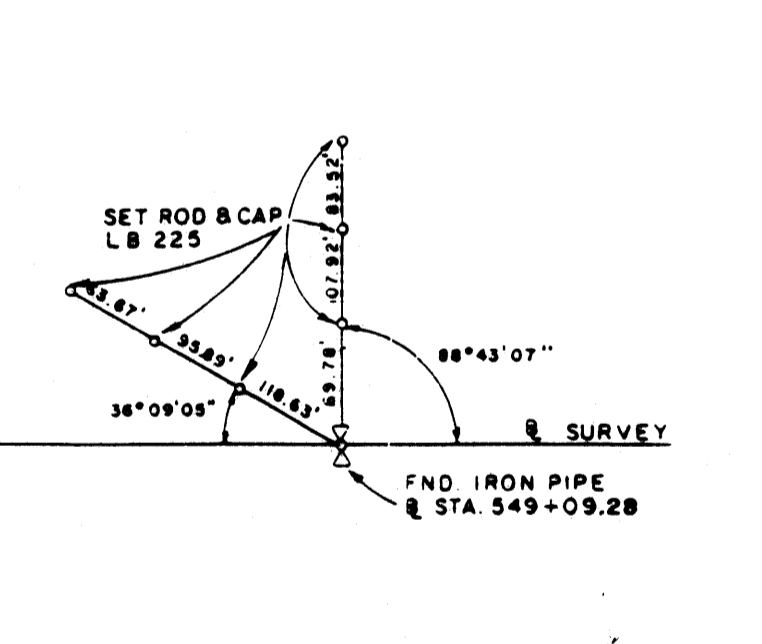
REFERENCE POINT @ STA. 509+99.71



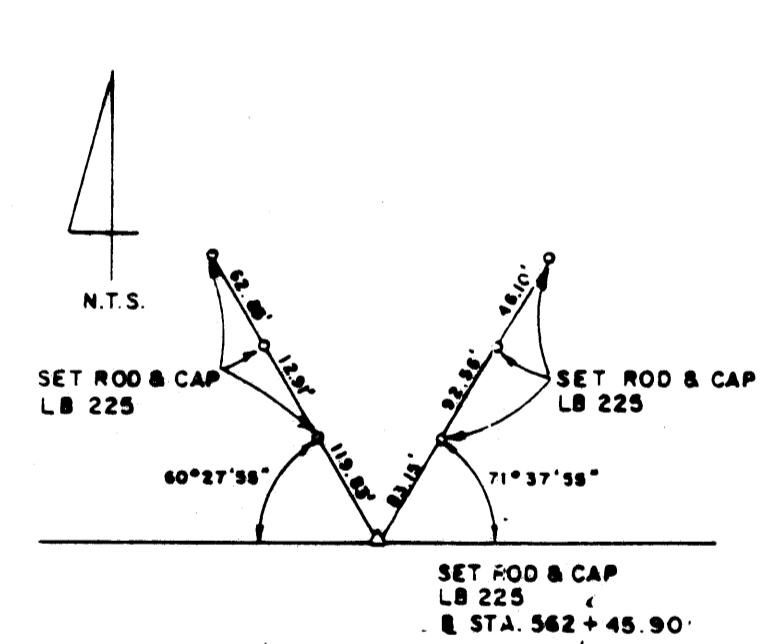
REFERENCE POINT @ STA. 522+71.49



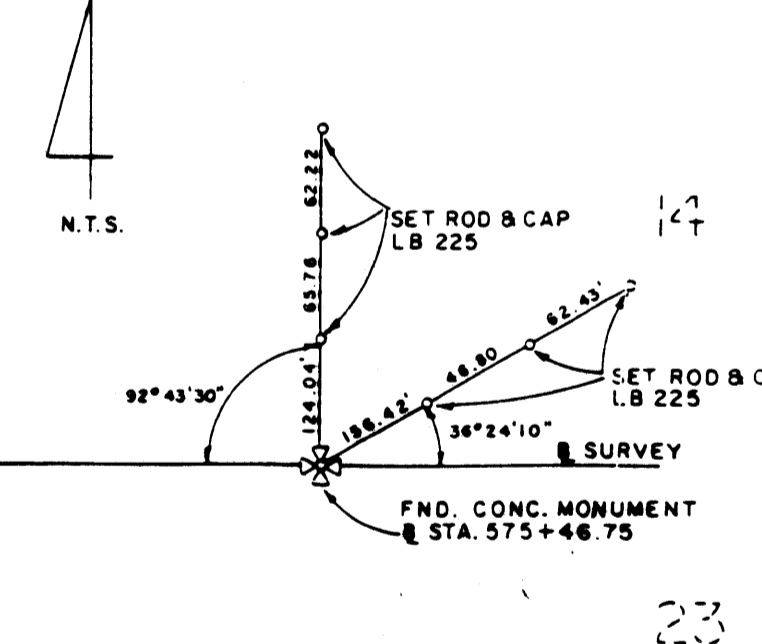
REFERENCE POINT @ STA. 536+24.56



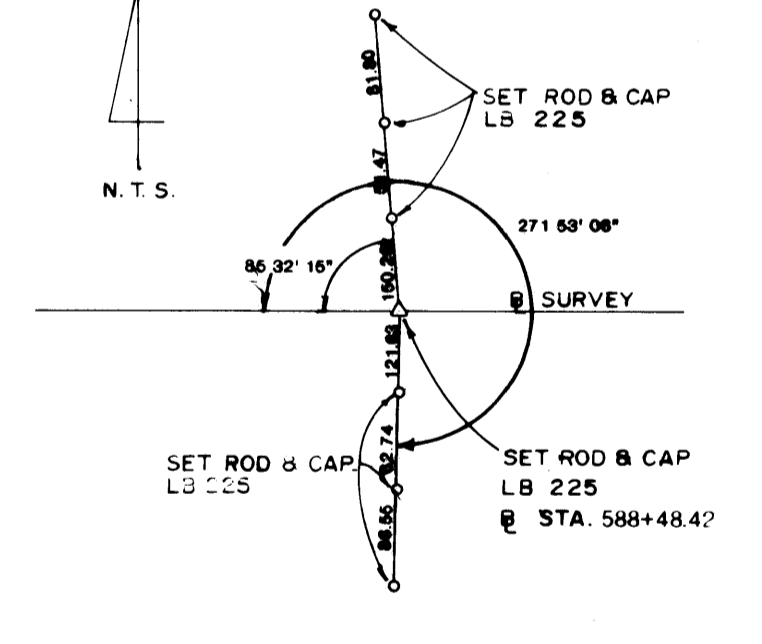
REFERENCE POINT @ STA. 549+09.28



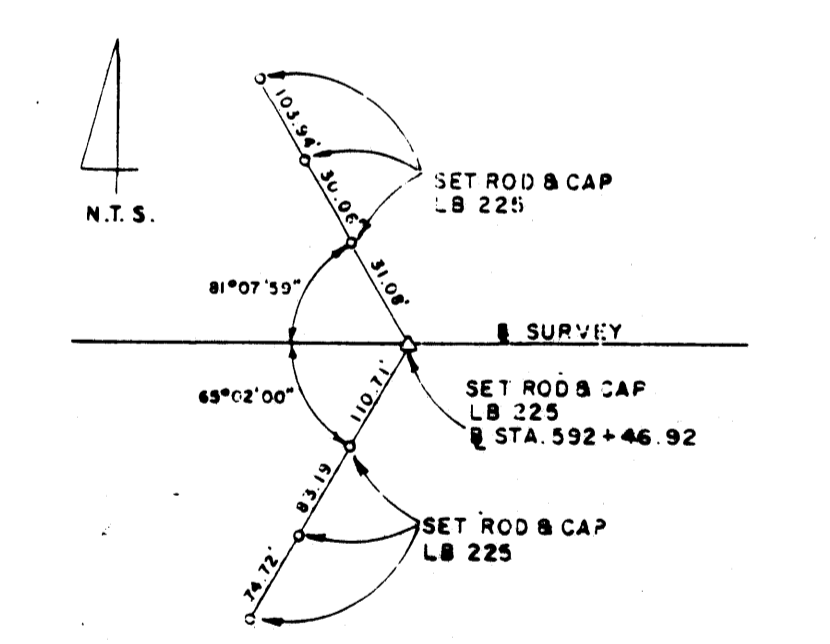
REFERENCE POINT @ STA. 562+45.90



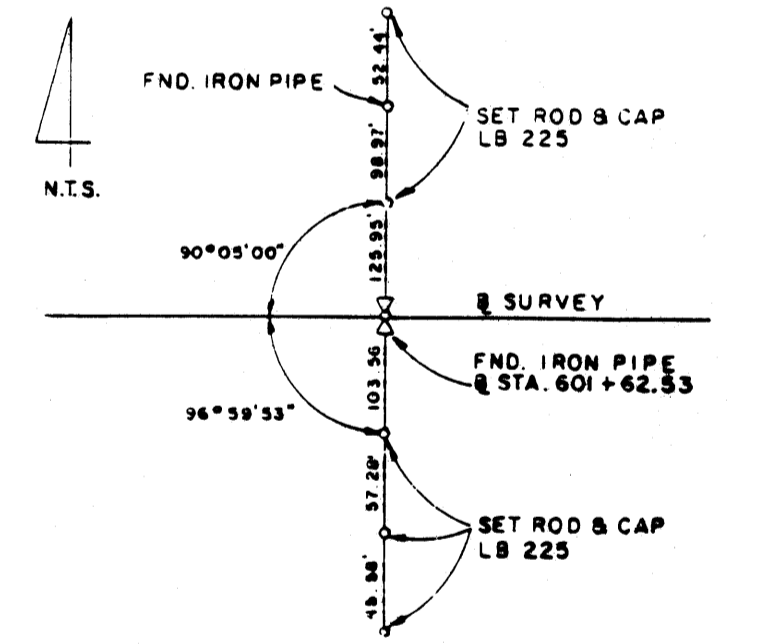
REFERENCE POINT @ STA. 575+46.75



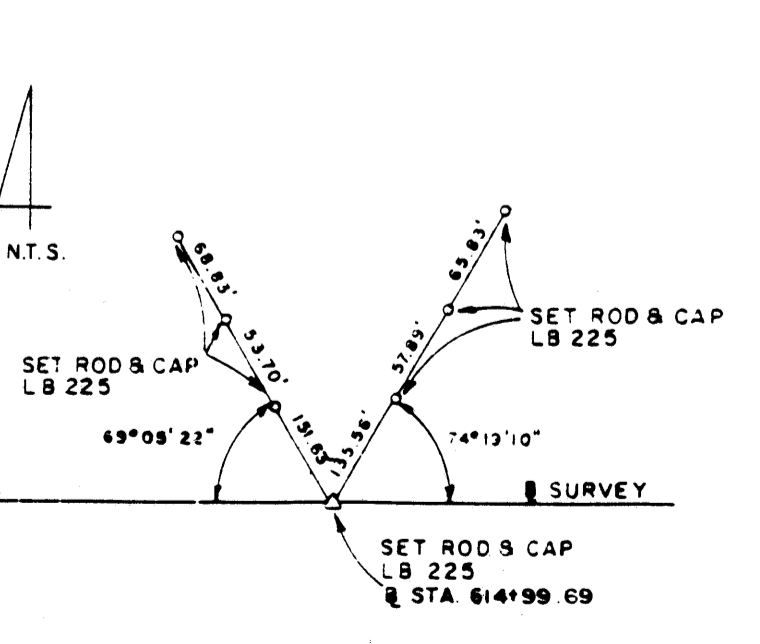
REFERENCE POINT @ STA. 588+48.42



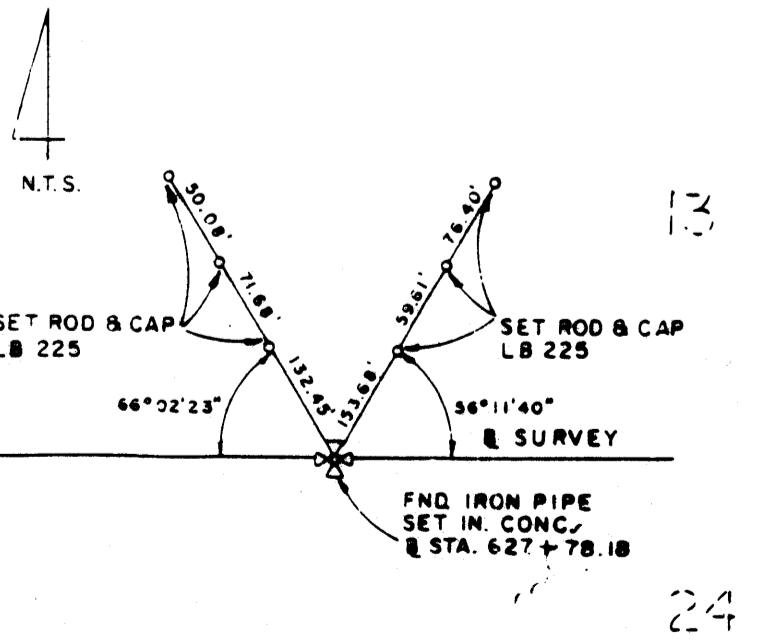
REFERENCE POINT @ STA. 592+46.92



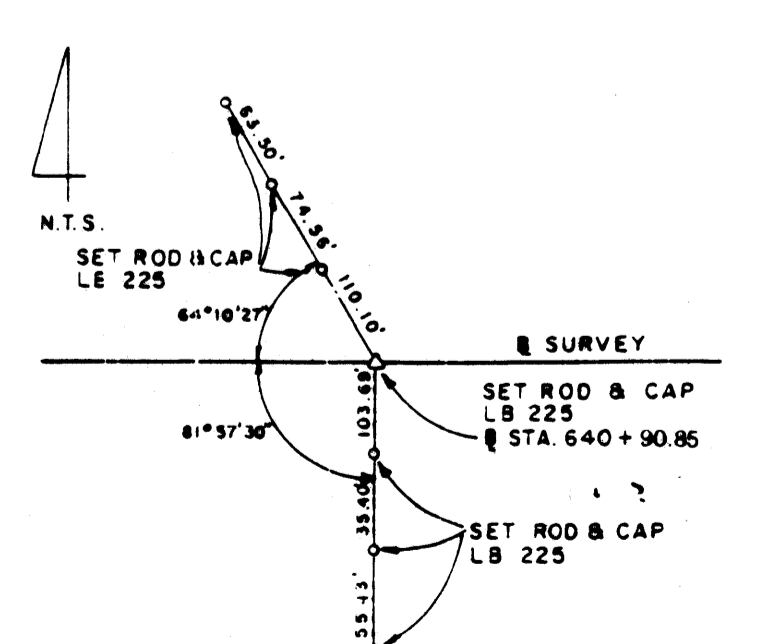
REFERENCE POINT @ STA. 601+62.53



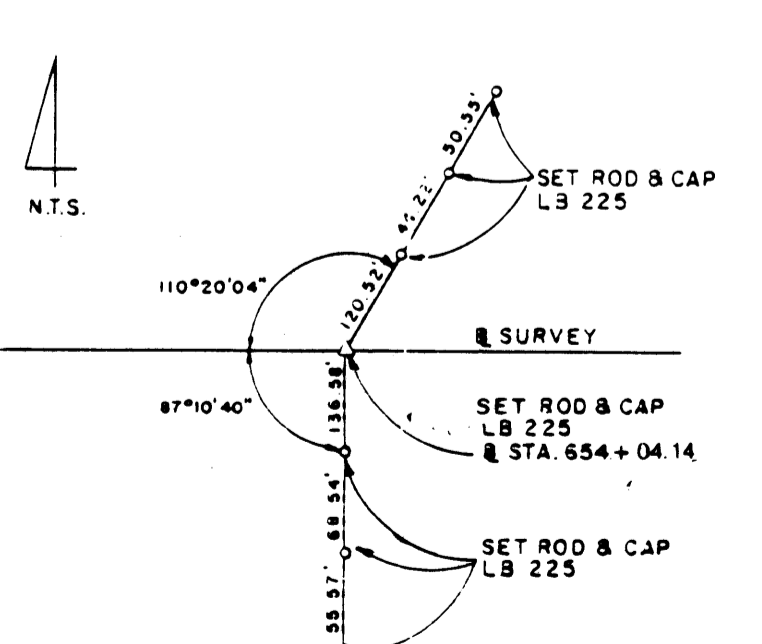
REFERENCE POINT @ STA. 614+99.69



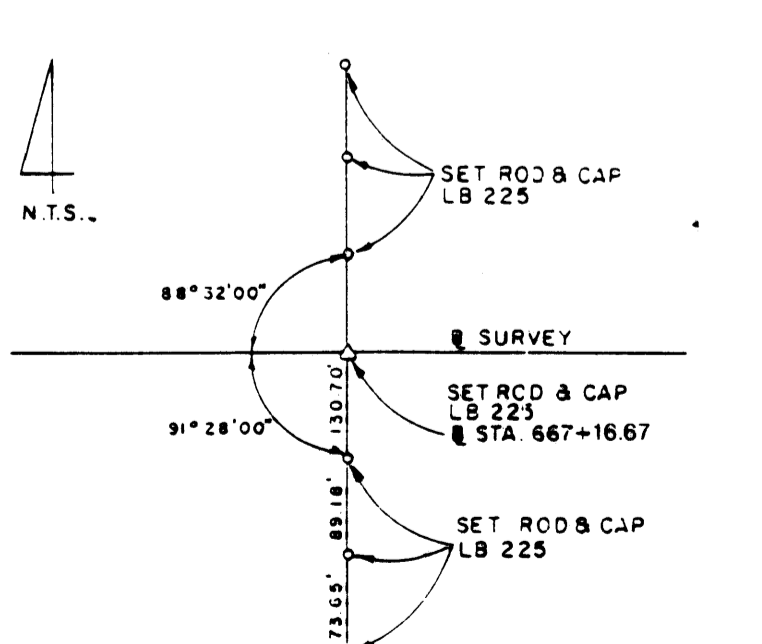
REFERENCE POINT @ STA. 627+78.18



REFERENCE POINT @ STA. 640+90.85



REFERENCE POINT @ STA. 654+04.14



REFERENCE POINT @ STA. 667+16.67

| MARTIN COUNTY                       |             |   |   |
|-------------------------------------|-------------|---|---|
| ENGINEERING / RIGHT OF WAY DIVISION |             |   |   |
| MAINTENANCE MAP                     |             |   |   |
| MARTIN GRADE                        |             | MARTIN COUNTY, FLORIDA                          |   |
| BY                                  | DATE        | APPROVED BY:                                    | DATE  |
| DRAWN                               | H.L.T. 1/91 |   |   |
| TRACED                              | N/A         |   |   |
| CHECKED                             | L.F.D. 9/92 |   |   |
| MAPS PREPARED BY:                   |             | DISTRICT ADMINISTRATOR OF SURVEYING AND MAPPING |   |
| KEITH & SCHNARS, INC.               |             | FIELD BOOK NOS.                                 |   |
|                                     |             | 90-13   |   |
|                                     |             | SCALE N. T. S.                                  |   |
| REVISION                            | BY          | DATE  | SECTION S.R. 710 TO C.R. 608 SHEET 10 OF 11 |